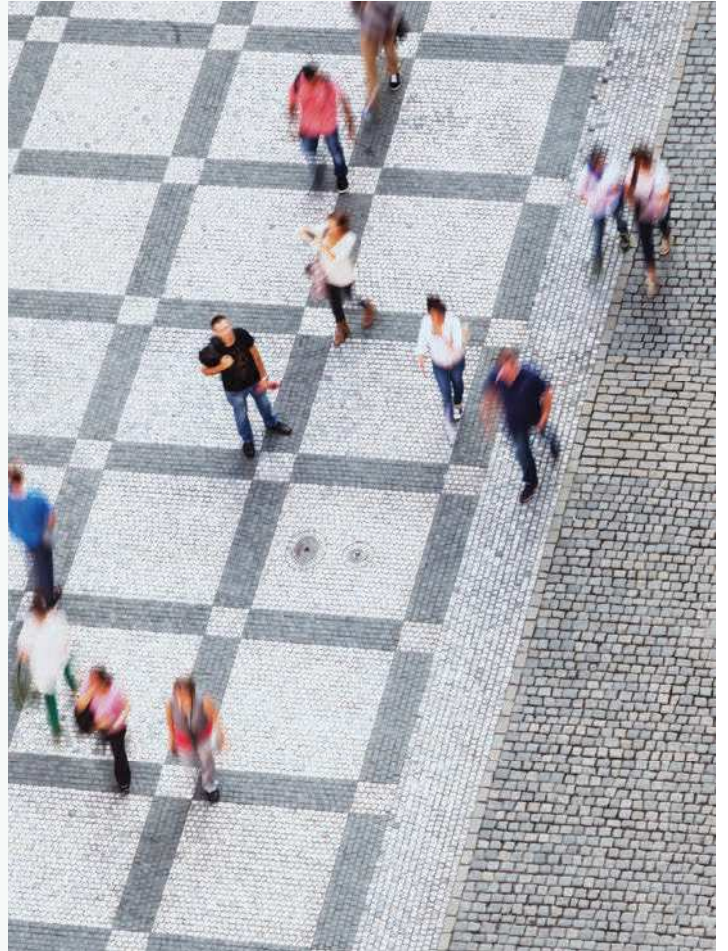


 **YORK**[®]
INSTALL CONFIDENCE



YORK[®] Commercial & Industrial HVAC 2016

A more comfortable,
safe and sustainable world

Solutions for your success

Every building is unique in design and technical requirements.

Our customers always receive customised building solutions to meet their individual needs.

Johnson Controls can handle many challenges with its innovative and flexible solutions. From A to Z, from consulting to planning, installation, maintenance (service, inspection and repair) and modernisation – Johnson Controls supports customers throughout the entire life cycle of a building.



AIR CONDITIONING SOLUTIONS

- Chillers & fan coils
- Absorption chillers
- Cooling towers
- Dry coolers
- Air Handling Units



BUILDING AUTOMATION

- Monitoring, control and optimisation
- Standardised communication protocols



SECURITY SOLUTIONS

- Identity management
- Facility zoning
- Video surveillance systems
- Alarm systems



Our well thought-out solutions guarantee a high level of comfort and energy efficiency.

The majority of our products are already rated as Class A for Energy Efficiency, with high levels of compatibility and flexibility allowing for future additions to be carried out without difficulty.

External systems can be easily integrated using BACnet® or proprietary solutions.

Our service team is available to you 24 hours a day with one of the largest service networks in Europe.



AIR CONDITIONING SOLUTIONS

- Air systems
- VRF systems
- Roof-top air-conditioners
- Minisplits



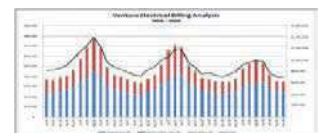
ROOM CONTROL

- Integration of HVAC controls with lighting and automatic blinds



SERVICE & SOLUTIONS

- Maintenance solutions
- Modernisation solutions
- Energy performance contract solutions
- Renewable energy solutions



ENERGY MANAGEMENT

- Energy monitoring
- Real time consumption Mgmt
- Continuous commissioning

Reference sites

At Johnson Controls, we are dedicated to protecting the environment since our invention of the electric thermostat in 1885, which provided a fundamental shift in the energy efficiency of buildings. Now, all over the world, our products and services empower customers and communities to consume less energy and conserve resources.

The following sites represent building solutions we have developed for our customers based on wide-ranging cross industrial experience in HVAC&R equipment, controls, fire and security systems, and services for commercial and industrial buildings.



Doğanay ▶

The name Doğanay come to be known in the food sector as the synonym for quality, prioritizing the concepts of quality, service, integrity, respect and love. We as Johnson Controls proud to be a part of their production cycle by giving a superior advantage of VSD driven water cooled and air cooled chillers.



OBA Makarna ▶

OBA Makarna, which was established in the year 1966 in Gaziantep, makes world class production in its new and modern facilities together with our YCIV & YVAA series air-cooled screw chillers which provides superior control and industry leading efficiency, delivering lower equipment and installation costs and driving down the total cost of ownership.



Naksan Plastik ▶

Naksan Plastik, which always aims for the best quality and researches the development in the sector systematically bringing all the innovation to its customers, is a global brand with its exports to 140 countries and they are strengthening awareness for the environment with environmentally friendly productions as well.



◀ Zorlu Center

Zorlu Center is one of the most prestigious and the first mixed-use project in Turkey. Our centrifugal chillers, air handling units, chiller plant optimization systems (CPO) and operation & maintenance services are provided as a single source solution partner.

ECOFRIO v2

Air cooled chiller / heat pump

YLCA / YLHA 0040 to 0150

A complete range from 39.6 kW up to 151 kW



The **YORK YLCA/YLHA** air-cooled chillers and heat pumps represents the right solution for any kind of installation.

With thousands of units installed all around Europe and Africa, used for different applications and in different climate conditions are one of the most flexible and reliable scroll type chillers in the market.

The standard product configuration and the different options and accessories selectable by the customer make these units ideal where a compact, and high performance unit is required.

Features

YLCA/YLHA 0040 to 0080

- 2 capacity steps (1 for size 40)
- LWT & RWT Control
- Plate heat exchanger
- Condenser fins (blue fin)
- Pressostatic LAK (-18°C)

YLCA/YLHA 0100 to 0150

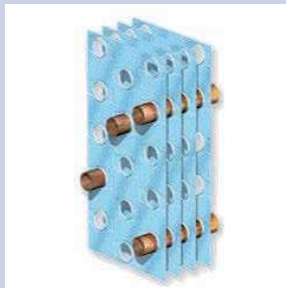
- Same features as YLCA/YLHA 40 to 80
- 4 capacity steps
- High efficiency at full and partial load
- Reduced noise levels
- 1/4 turn lock for easy access

Options / Accessories

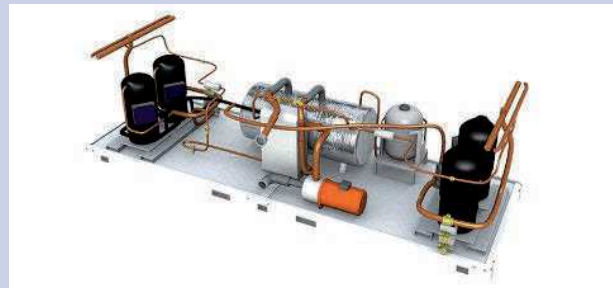
- Unit without pack
- BMS Communication (Carel and Modbus protocol)
- Remote control
- Remote terminal
- Water filter (unit without Hydro Pack)
- Flow switch (unit without Hydro Pack)
- Low noise version
- Dual pump version
- Antivibration mountings
- Condenser protection grille



Low noise version with special insulation in the compressor chamber.



Special coating on the condenser fins for improved corrosion protection.



Pump built-in for space saving and easy installation.



ECOFRIO v2

YLCA / YLHA 0040 to 0150

Technical features

T Three phases supply P Hydro Pack H Heat pump

| Model | | YLCA / YLHA | | | | | | | | |
|----------------------------|---|-----------------------------|-----------|------------------|--------------------|---------------------------|--------------------|----------------|----------------|---------------|
| | | 0040 T-TP | 0050 T-TP | 0060 T-TP | 0080 T-TP | 0100 T-TP | 0120 T-TP | 0150 T-TP | | |
| Performance | Cooling capacity c/o units (1) | kW | | 39.3 | 51.8 | 60.1 | 77 | 100.3 | 118.5 | 150.5 |
| | Total Input Power (1) (3) | kW | | 13.69 | 18.3 | 20.03 | 27.11 | 34.47 | 40.44 | 54.14 |
| | EER (1) | | | 2.87 | 2.83 | 3 | 2.84 | 2.91 | 2.93 | 2.78 |
| | ESEER (1) | | | 3.15 | 3.18 | 3.3 | 3.15 | 3.74 | 3.83 | 3.66 |
| | Cooling capacity h/p units (1) | kW | | 37.6 | 51.2 | 60.1 | 71.7 | 95.4 | 113.6 | 144.5 |
| | Heating capacity h/p units (1) | kW | | 38.8 | 52.8 | 60 | 75.2 | 104.6 | 120 | 150.5 |
| | Total Input Power cool/heat mode (1) kW | | | 13.48 / 12.81 | 17.65 / 18.21 | 20.03 / 20.2 | 26.46 / 26.86 | 36.14 / 37.76 | 43.69 / 40 | 51.06 / 53.94 |
| | EER / COP (1) | | | 2.79 / 3.03 | 2.93 / 2.9 | 3 / 2.97 | 2.71 / 2.8 | 2.64 / 2.77 | 2.6 / 3 | 2.83 / 2.79 |
| | ESEER (1) | | | 3.15 | 3.18 | 3.29 | 2.91 | 3.39 | 3.43 | 3.73 |
| | Capacity steps | % | | 0 / 100 | | | 0-50-100 | | 0-25-50-75-100 | |
| Sound power level STD / LN | dB(A) | | 78 / 73 | 81 / 76 | 87 / 77 | 83 / 79 | 82 / 78 | 82 / 78 | 84 / 80 | |
| Compressor | Type | Scroll | | | | | | | | |
| | Quantity | 1 | | 2 | | 3 | | 4 | | |
| Air side heat exchanger | Fans quantity | 2 | | 3 | | 4 | | | | |
| | Working ambient temp. cool. / heat. mode | -18°C ~ 46°C / -10°C ~ 20°C | | | | | | | | |
| Water side heat exchanger | Type | Single Plate Heat Exchanger | | | | Dual Plate Heat Exchanger | | | | |
| | Unit water volume (2) | Litres | | 131 | 188 | 194 | 285 | 193 | 195 | 214 |
| | Pump Type | Multistage horizontal pumps | | | | | | | | |
| | Nominal water flow | l/h | | 6 820 | 8 960 | 10 400 | 13 350 | 17 600 | 20 470 | 25 970 |
| | Available pressure (1) (2) | kPa | | 105 | 108 | 158 | 123 | 187 | 202 | 186 |
| | Pressure drop (1) (3) | kPa | | 75 | 39 | 50 | 63 | 59 | 33 | 27 |
| | Working range water leaving temperature cooling / heating (4) | -5°C ~ 15°C / 30°C ~ 50°C | | | | | | | | |
| Dimensions & Weight | Water connections (2) | inch | | 1 1/4" | | 2" | | 2 1/2" | | |
| | Height / Width / Depth | mm | | 1573/1500/822 | 1600 / 1011 / 2104 | 1600/1118/2944 | 2190 / 1101 / 3416 | 2263/1101/3770 | | |
| | Weight without pack / pack c/o | kg | | 340 / 380 | 524 / 580 | 555 / 611 | 715 / 785 | 1 124 / 1 220 | 1 190 / 1 286 | 1 415 / 1 503 |
| | Weight without pack / pack h/p | kg | | 337 / 397 | 537 / 593 | 568 / 624 | 735 / 805 | 1 154 / 1 250 | 1 220 / 1 316 | 1 445 / 1 703 |
| Electrical features | Voltage / Phases / Frequency | V/ph/hz | | 400 / 3 / 50+N+E | | | | | | |
| | Maximum Unit current | A | | 33 | 46.2 | 49.2 | 70.5 | 80 | 108 | 120 |

YLCA: Cooling only units models. YLHA: Air to water heat pump models.

(1) net values at Eurovent nominal conditions (2) version P with hydro kit with filter (3) version without hydro kit (4) below 6°C with glycol

Nominal conditions: Cooling capacities in kW given for 7°C water leaving temperature Δt 5°C and 35°C ambient temperature

Heating capacities in kW given for 45°C water leaving temperature and 7°C ambient temperature

Compatibility table / Codes

| Model | 0040 TP | 0050 TP | 0060 TP | 0080 TP | 0100 TP | 0120 TP | 0150 TP |
|--|------------|------------|------------|------------|------------|------------|------------|
| YLCA Cooling only unit (Pack included) | S668554084 | S668525182 | S668526182 | S668528182 | S668521182 | S66851156 | S668551507 |
| YLHA Heat pump unit (Pack included) | S668654084 | S668625182 | S668626182 | S668628182 | S668621182 | S668651156 | S668651506 |
| Model | 0040 T | 0050 T | 0060 T | 0080 T | 0100 T | 0120 T | 0150 T |
| YLCA Cooling only unit (without Pack) | S668554080 | S668525180 | S668526180 | S668528180 | S668521180 | S66851154 | S668551503 |
| YLHA Heat pump unit (without Pack) | S668654080 | S668625180 | S668626180 | S668628180 | S668621180 | S668651154 | S668651504 |

Use this unit code when a factory fitted option is NOT required

Accessories (Supplied loose)

| | | | | |
|---|------------|------------|------------|------------|
| AVM mounting | S613029002 | S613026080 | S613028180 | S613021580 |
| Mechanical flow switch | | S611992021 | | |
| Water Filter * | S611300150 | S611300170 | S611300190 | |
| Remote control | | S613802011 | | |
| Remote terminal | | S613802231 | | - |
| Cable for remote connection of the terminal | | - | | S613802241 |
| B.M.S. Communication | | S613802041 | | S613802051 |

| Model | 0040 TP | 0050 TP | 0060 TP | 0080 TP | 0100 TP | 0120 TP | 0150 TP |
|--|------------|------------|------------|------------|------------|------------|------------|
| YLCA Cooling only unit (Pack included) | S668000226 | S668000247 | S668000251 | S668000255 | S668000259 | S668000107 | S668000111 |
| YLHA Heat pump unit (Pack included) | S668000228 | S668000248 | S668000252 | S668000256 | S668000260 | S668000131 | S668000135 |
| Model | 0040 T | 0050 T | 0060 T | 0080 T | 0100 T | 0120 T | 0150 T |
| YLCA Cooling only unit (without Pack) | S668000038 | S668000245 | S668000249 | S668000253 | S668000257 | S668000105 | S668000109 |
| YLHA Heat pump unit (without Pack) | S668000039 | S668000246 | S668000250 | S668000254 | S668000258 | S668000129 | S668000133 |

Use this unit code when a factory fitted option is required

Options (Factory fitted)

| | | | | | | |
|-----------------------------|------------|------------|------------|------------|------------|------------|
| Low Noise version | S613990550 | S613990650 | S613990850 | S613991050 | S613991285 | S613991584 |
| Softstart | S606744692 | S606744693 | | | S606744694 | |
| Dual pumps ** | - | S613990540 | S613990640 | S613990840 | S613991040 | S613991286 |
| Condenser protection grille | S613995090 | S613995091 | S613995092 | S613995093 | | S613995094 |

* included with unit version "P" only for unit without pack. Filter size: 2" for YLCA 40-50-60-80 and 2 1/2" for YLHA 100-120-150.

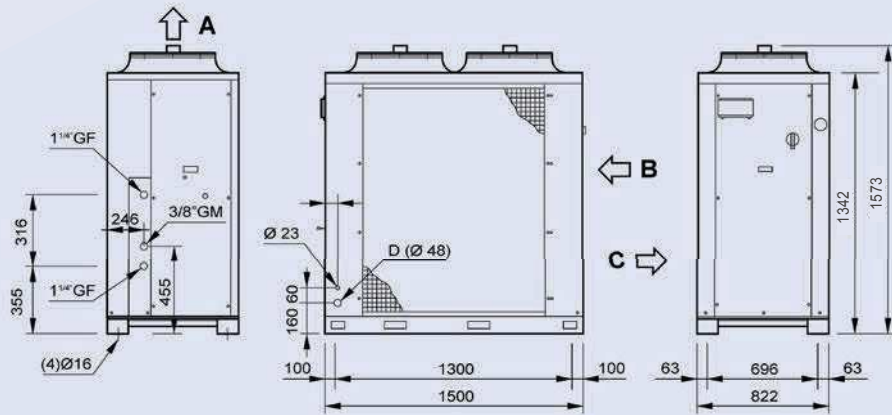
** Dual pump option has to be ordered with units with hydrokit.



Manufacturer reserves the rights to change specifications without prior notice.

Dimensions and hydraulic connections

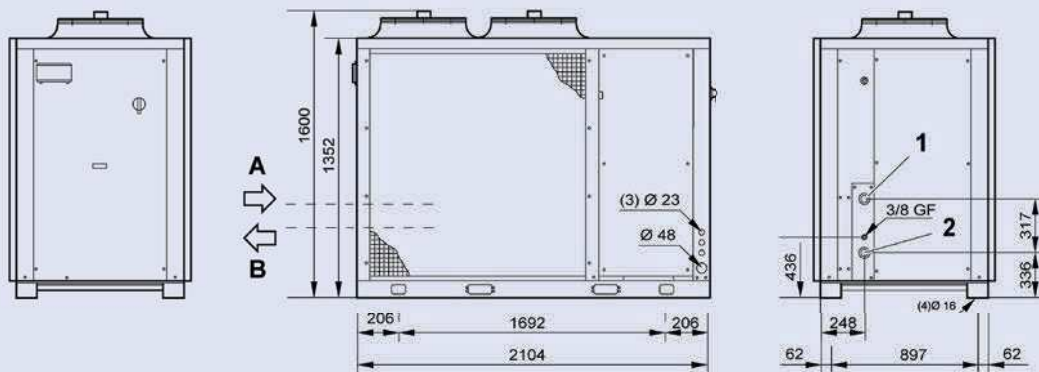
YLCA-YLHA 0040 T-TP



All dimensions in mm. Drawings not a scale.

| Unit | A | B | C |
|----------------|------------|-------------|--------------|
| YLCA/YLHA 0040 | Air outlet | Water inlet | Water outlet |

YLCA-YLHA 0050 and 0060 T-TP



All dimensions in mm. Drawings not a scale.

| Unit | A | B | 1 | 2 |
|---------------------|-------------|--------------|---------------|----------------|
| YLCA/YLHA 0050-0060 | Water inlet | Water outlet | 2" GF (Inlet) | 2" GF (Outlet) |